

CONSTRUCTION STRUCTURE STRUKTUR STRUCTUUR	Tufting 1/10" loop pile Tufté 1/10" bouclé Getuftet 1/10" Schlinge Getuft 1/10" lussenpool	STAIR SUITABILITY ESCALIERS TREPPENEIGNUNG TRAPPENGESCHIKTHEID	EN 1963 A: intensive use
PILE MATERIAL COMPOSITION DU VELOURS POLMATERIAL POOLMATERIAAL	100% PA 6 IMPREL® solution dyed	PERMANENTLY ANTISTATIC ANTISTATIC PERMANENT PERMANENT ANTISTATISCH PERMANENT ANTISTATISCH	ISO 6356 < 2 kV
PRIMARY BACKING SUPPORT TRÄGERMATERIAL TUFTDOEK	non woven PES non woven PES Vlies, PES non woven PES	IMPACT NOISE RATING ISOLATION PHONIQUE TRITTSCHALLVERBESSERUNG GELUIDSISOLATIE	ISO 140-8 25 dB ΔLw
SECONDARY BACKING DOSSIER RÜCKEN TAPIJTRUG	Action Back	SOUND ABSORPTION ABSORPTION PHONIQUE SCHALLABSORPTIONSGRAD GELUIDSABSORPTIE	ISO 354 0.15 αw
PILE WEIGHT POIDS DU VELOURS POLEINSATZGEWICHT POOLGEWICHT	Ca. 540 gr/m²	THERMAL RESISTANCE RÉSISTANCE THERMIQUE WÄRMEDURCHLASSWIDERSTAND WARMTEDOORLAATWEERSTAND	ISO 8302 0,07 m² K/W
TOTAL WEIGHT POIDS TOTAL GESAMTGEWICHT TOTAAL GEWICHT	Ca. 1.800 gr/m²	FASTNESS TO LIGHT SOLIDITÉ A LA LUMIÈRE LICHTECHTHEIT LICHTECHTHEID	ISO 105-B02 ≥ 7
PILE HEIGHT EPAISSEUR DU VELOURS POLHÖHE POOLHOOGTE	Ca. 3,0 mm	COLOUR FASTNESS TO WATER SOLIDITÉ À L'EAU WASSERECHTHEIT WATERECHTHEID	EN ISO 105-E01 ≥ 4-5
TOTAL HEIGHT EPAISSEUR TOTAL GESAMTHÖHE TOTALE DIKTE	Ca. 5,4 mm	FIRE RESISTANCE COMPORTEMENT AU FEU BRENNVERHALTEN BRANDGEDRAG	EN 13501-1 Bfl-s1(if glued)
TUFT DENSITY NOMBRES DE POINTS NOPPENZAHL AANTAL PUNTEN	Ca. 180 000/m²	RUBBING FASTNESS SOLIDITÉ AU FROTTEMENT REIBECHTHEIT WRIJFECHTHEID	EN ISO 105-X12 ≥ 4
PILE DENSITY DENSITÉ DU VELOURS POLROHDICHTHEIT POOLDICHTHEID	Ca. 0.111 g/cm³	NUMBER OF COLOURS NOMBRES DE COULEURS ANZAHL FARBEN AANTAL KLEUREN	18
CLASSIFICATION CLASSEMENT KLASSIFIKATION CLASSIFICATIE	EN 1307 33 - LC1	WIDTH LARGEUR BREITE BREEDTE	EN ISO 3018 ca. 400 cm
CASTOR CHAIR SUITABILITY CHAISE À ROULETTES STUHLROLLENEIGNUNG ROLSTOELGESCHIKTHEID	EN 985 A: intensive use		



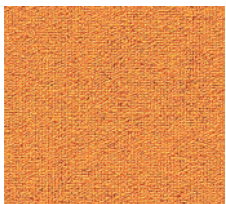
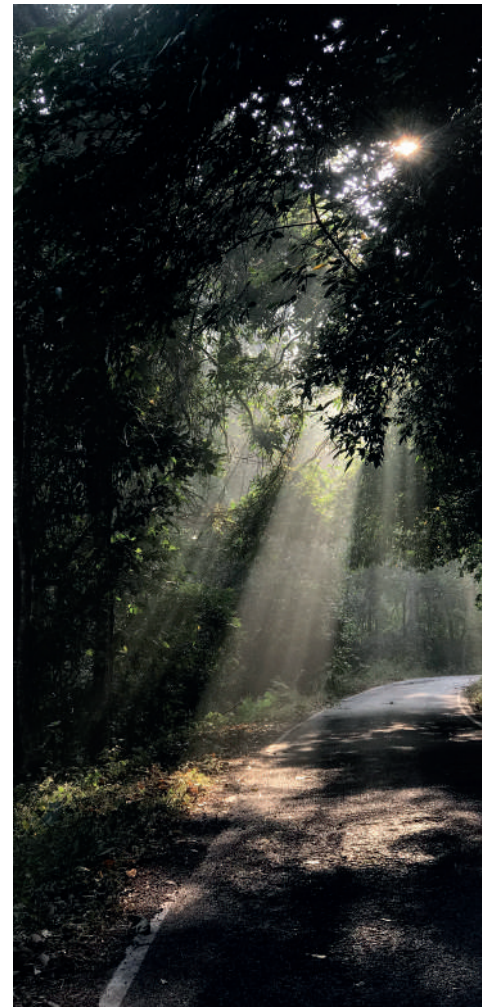
EN14041
CE
20
Balta Industries - Kanegem-
straat 15 - BE 8700 Tielt
DOP: 1011#IE0ABV
Textile Floor Covering EN1307
Notified body 2401
www.baltamediabank.com

EAC

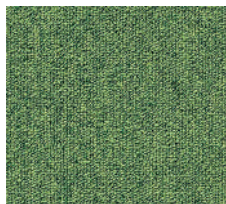


REG. NR
D00EC6DF
www.pro-dis.info





▲ 55



▲ 21



▲ 76



▲ 46



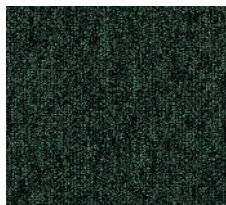
▲ 32



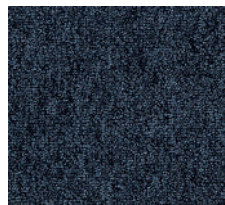
▲ 34



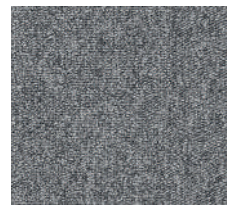
▲ 10



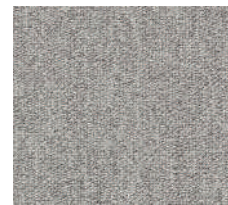
▲ 28



▲ 78



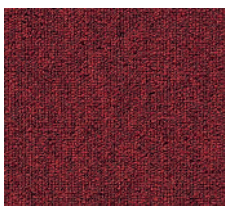
▲ 95



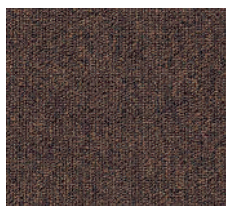
▲ 193



▲ 90



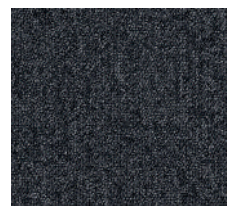
▲ 12



▲ 45



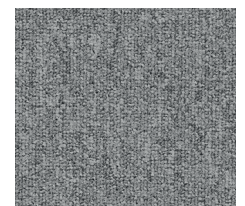
▲ 87



▲ 99



▲ 96



▲ 195