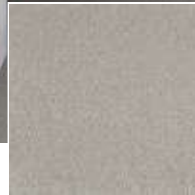


Soft Distinction

TECHNICAL SPECIFICATIONS

Secondary backing: SB
 Quality code: SDI
 Manufacturing process: Tufted
 Pile composition: Ecceleena Silk



432 / Soft Distinction / Bamboo mat 2



042
Anémone
2



212
Tobacco
2



242
Cream 2



272
Almond 2



432
Bamboo
mat 2



462
Hemp 2



832
Ash 2



842
Moonshine
2



844
Moonshine
4



852
Moonbeam
2



862
Granite 2



872
Silver 2



874
Silver 4



882
Pearl 2